



SIGMA

FOVF

SPECIFICATION

Heavy duty elevator available for passenger, freight and car

Specification

For passenger & freight

Rated Speed (m/s)	Load(Kg)					
	630	1000	2000	3000	4000	5000
0.25					YJ245D	
0.5				YJ245D		
0.63	21HT			GETM		
1.0	21HT			GETM		



For car

Rated Speed (m/s)	Load(Kg)	
	3000	5000
0.25	YJ245D	
0.5	YJ245D	

- ✓ Max rise 15m(0.25m/s) & 30m(0.5-0.65m/s) & 50m(1m/s)
- ✓ Max 8 stops(0.25-0.65m/s) & 16 stops(1m/s)
- ✓ Max group control: G2C
- ✓ GB7588-2003 code
- ✓ Comply with OTIS design and qualification standard

CONFIGURATION

Controller	OH-CON4421 OH-CON4423
Controller board	LCB II
Drive	SIEI
Machine	21HT/YJ245D/GETM
Door Operator	NUMEN_S/Selcom/Fermator
Safety	HN6000C/QS8/QS12
Buffer	PU/Oil buffer
Governor	Shenling/Samson

SAFETY COMPONENTS



Governor

Safety Components

E3 Qualified



Safety Gear

- ✔ Otis design qualification
 - ✔ Otis MFG process control
 - ✔ Otis change control
- ✔ Reliable
 - ✔ Durable
 - ✔ Traceability



Buffer

<i>Component</i>	<i>OTIS E3 Requirements</i>	<i>EN81 -1 Requirements</i>
<i>Safety Gear</i>	25 freefall and runaway test	4 freefall test
<i>Speed Governor</i>	25 Continuous tripping	20 Continuous tripping
<i>Buffer</i>	100 strike test	6 strike test

STANDARD FIXTURES



STD:

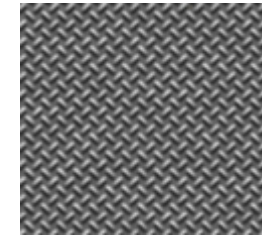
- Car wall: 2130 (Painted W1001)
- Car Ceiling: B4090
- Car Floor : 4901AM(Steel plate)
- COP: COP1(LED)



COP1



B4090L



4901 AM



LED



LED



TFT



STN

HBP2 serials
Hall Position Indicator

FLOOR

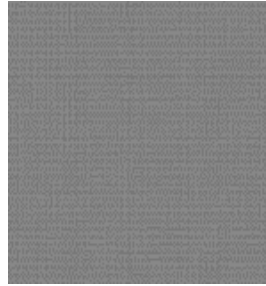
4901
PVC

Color: MA-0201

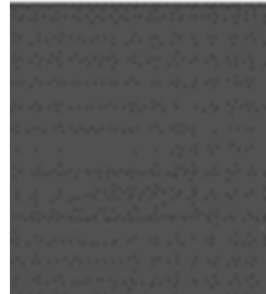


4901AE
Rubber

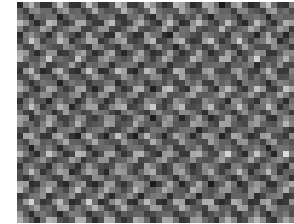
Color: A-105



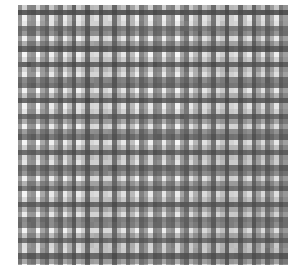
Color: A-104



4901AM
Steel plate



4901AN
St.st. plate



HANDRAIL



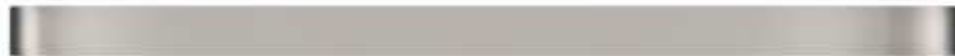
4900-A: Hairline st.st.
4900-B: Mirror st.st.



4900B-A: Hairline st.st.
4900B-B: Mirror st.st.



4900F: Hairline st.st.



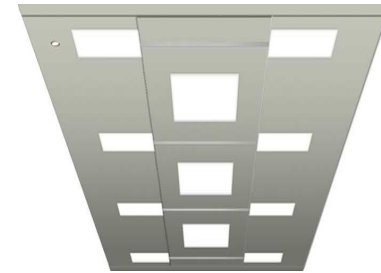
CEILING



4020AL



4096A



4098



4051AL



4082L



4090L



4191L



B4090L

BUTTONS

BR27A



BR27A(B)



BR36A



BR36A(B)



BR34C(B)



BS34D



BS34D(B)



BS34C



* (B) is with Braille chip

FUNCTION

Basic but necessary functions tailored for residential segment to ensure a safe and comfortable ride

BELL	CBC	CCM	DCP	DDT	DOB/DCB	DTC	DTO	Standard
EDP	ELTU	EN-CCO	EN-CK	ERO	HDI/CDI	HPI/CPI	ICU-3	
LNS	LOBBY	LR	LWS	NTSD	OHT	PKS	PRK	
RE-OP	RIN	SE	TCI					
Refer to SEB for more STD function information								

ADO	AES	AMS	ARED	AUTO -PKS	BA	BA 485	DHB	Option
EFO	EFS	EFS2	EMS	EPO	EQO	FSL	G2C	
ISC	NSB	PME	REL	SSM				

LAYOUT DIMENSION

For passenger & freight

Duty load (kg)	Speed (m/s)	Entrance	Hoistway size W(mm)*D(mm)	Car outside size A(mm)*B(mm)	Door Opening OP(mm)*OPH(mm)	Machine Room			Overhead	Pit
						W(mm)	D(mm)	H(mm)		
630	0.5, 0.63	1	2150*1860	1250*1500	1100*2100	2800	3500	2500	4450	1500
630	1	1	2150*1860	1250*1500	1100*2100	2800	3500	2500	4450	1500
1000	0.5, 0.63	1	2350*2160	1500*1800	1100*2100	3000	3800	2500	4450	1500
1000	1	1	2350*2160	1500*1800	1100*2100	3000	3800	2500	4450	1500
2000	0.5, 0.63	1	2700*2860	1800*2500	1500*2100	2700	4500	2500	4450	1500
2000	1	1	2700*2860	1800*2500	1500*2100	2700	4500	2500	4450	1500
3000	0.5	1	3450*3360	2100*3000	2000*2400	3450	4000	3000	4800	1500
3000	0.5	1	3450*3360	2100*3000	2000*2400	3450	4000	3000	4800	1500
4000	0.25, 0.5	2	3450*4160	2100*3800	2000*2400	3450	4160	3000	4800	1500
5000	0.25, 0.5	2	3950*4160	2500*3800	2400*2400	3950	4160	3000	4800	1500

For car

Duty load (kg)	Speed (m/s)	Entrance	Hoistway size W(mm)*D(mm)	Car outside size A(mm)*B(mm)	Door Opening OP(mm)*OPH(mm)	Machine Room			Overhead	Pit
						W(mm)	D(mm)	H(mm)		
3000	0.25, 0.5	1 / 2	4100*6300	2600*6000	2400*2400	4100	6300	3000	4800	1500
5000	0.25, 0.5	1 / 2	4560*6300	3500*6000	2600*2400	4560	6300	3000	4800	1500